



The new CAP in the framework of the MFF 2028-2034

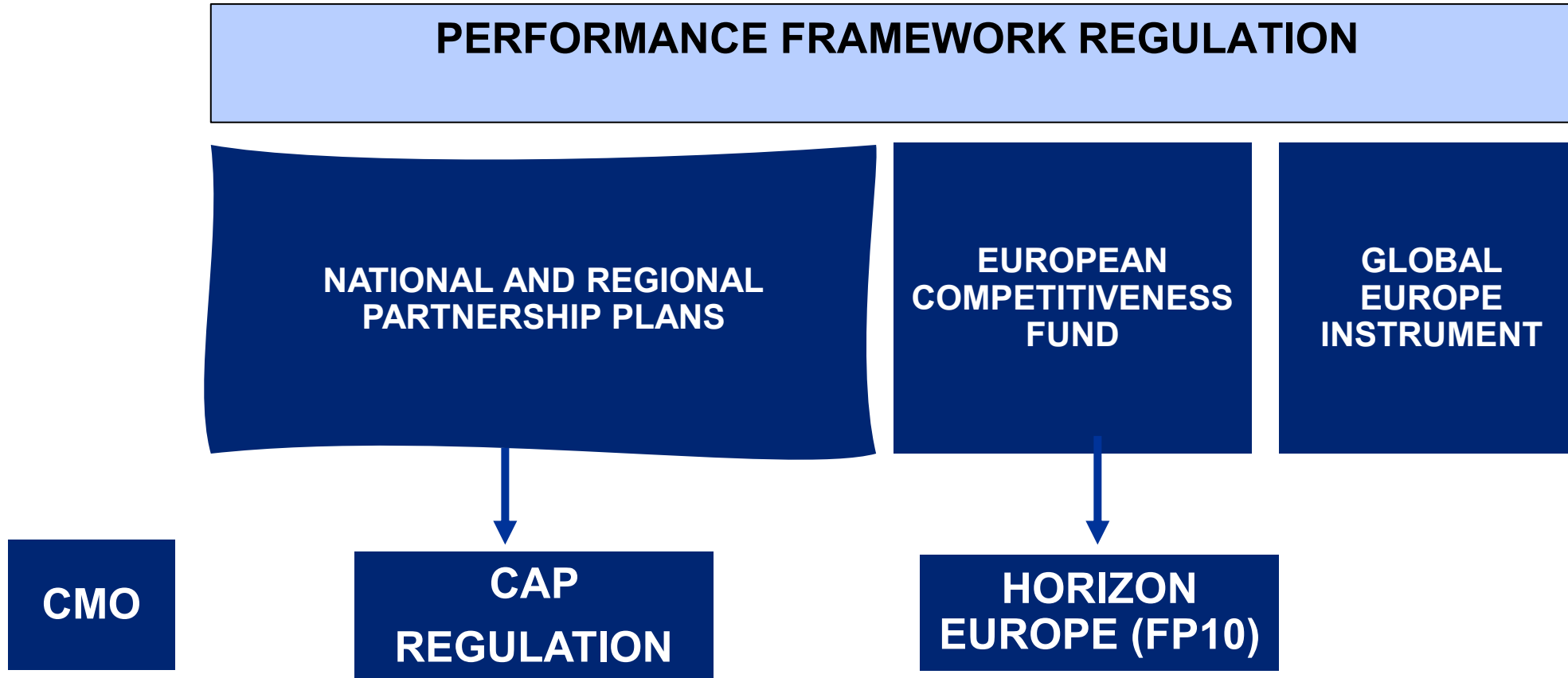
Brussels. 18 July 2025

The 2028-2034 EU budget for a stronger Europe

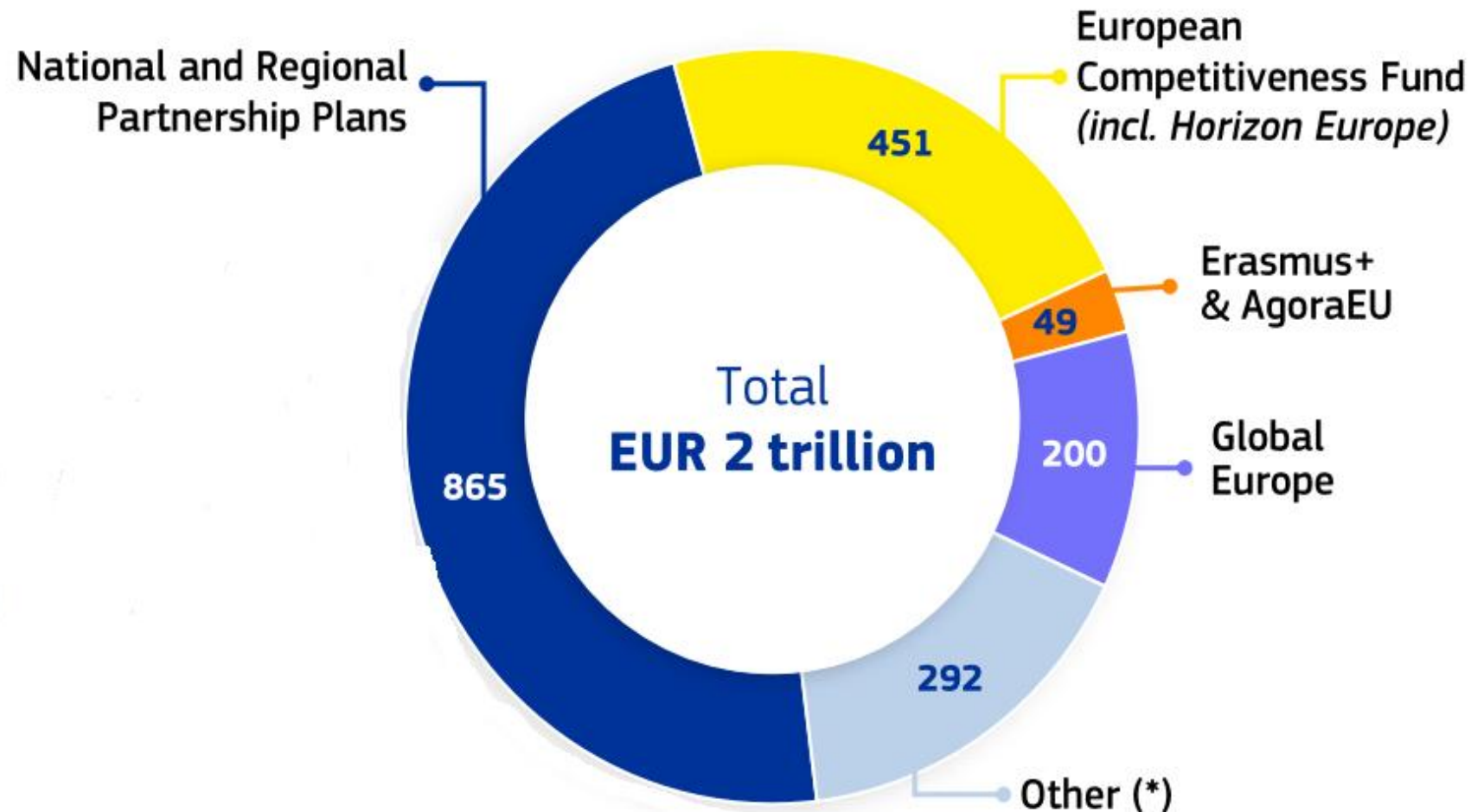
1. **More flexibility** across the budget, so Europe has the **capacity to act – and react – fast**
2. **Simpler, more streamlined and harmonised** EU financial programmes to easily **find and access funding** opportunities
3. A budget tailored to local needs, with **National and Regional Partnership Plans** for investments and reforms, for **targeted impact where it matters most**
4. A powerful **competitiveness boost**, for Europe to secure supply chains, scale-up innovation and lead the global race for clean and smart technology;
5. A **balanced package of new own resources** that ensures adequate revenues for our priorities while minimising pressure on national public finances.



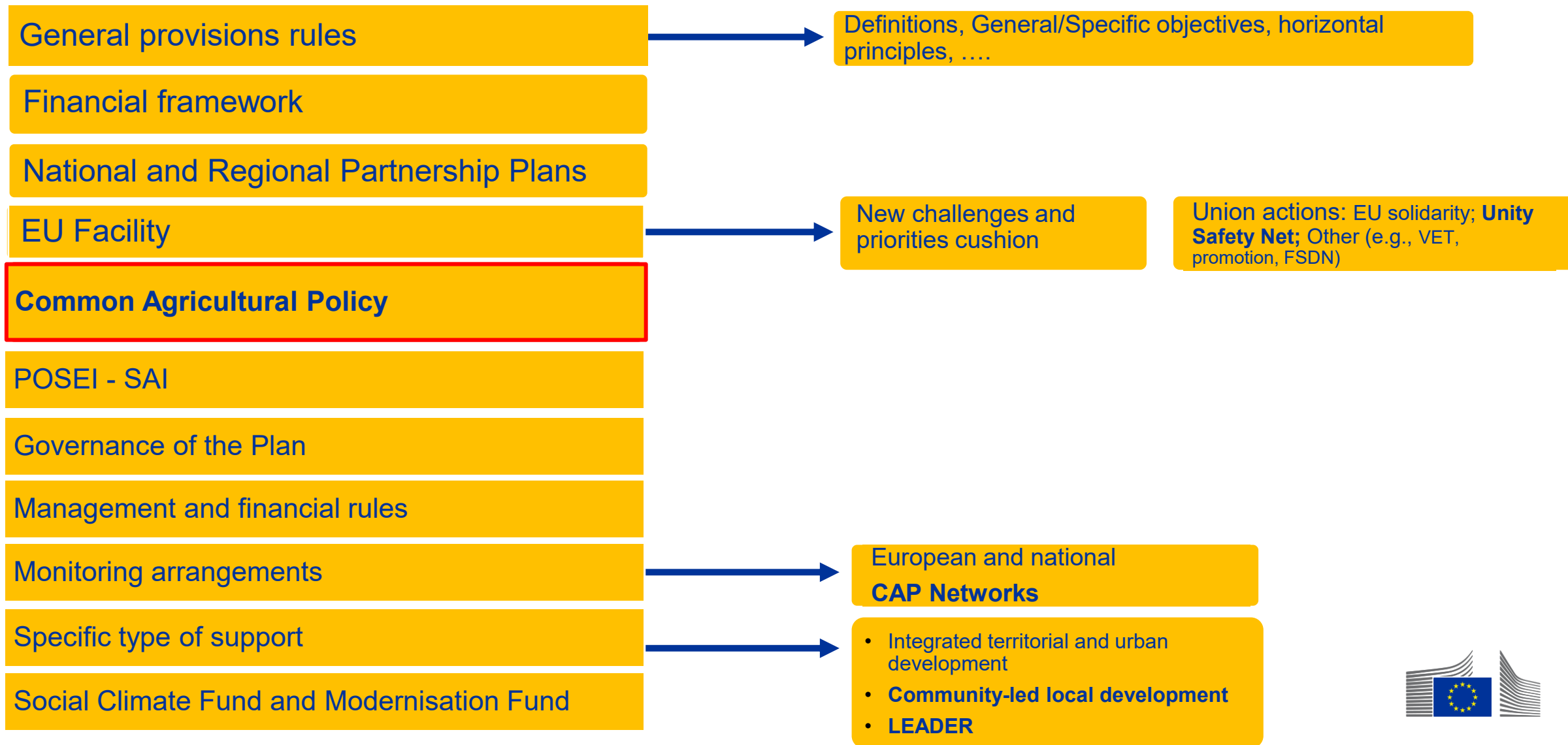
MFF architecture



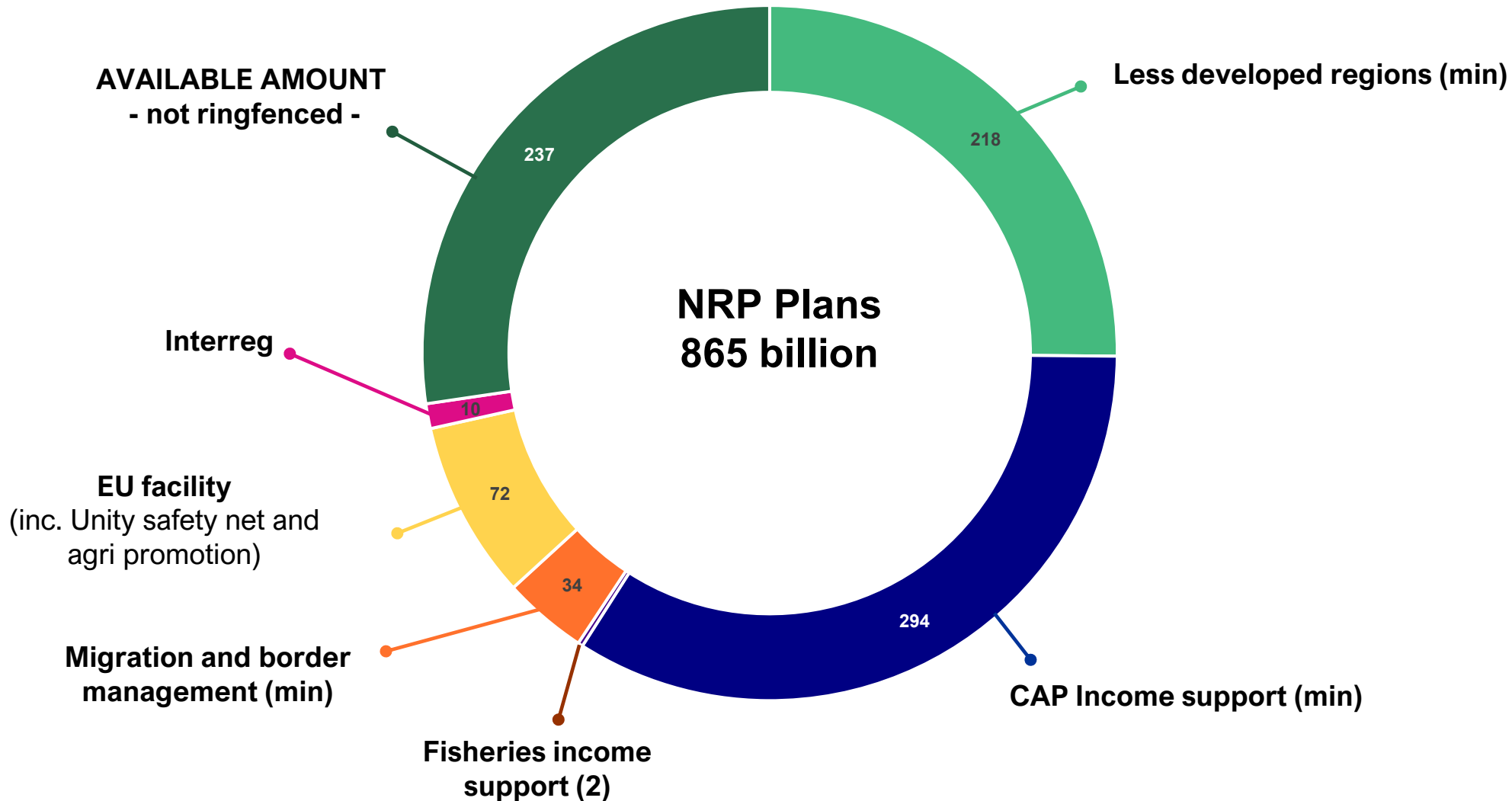
The 2028-2034 EU budget



National and Regional Partnership Regulation



The CAP within the NRP Plans



A Common Policy in partnership with MS

EU	EU Specific objectives
	Indicators
	CAP toolbox
	Country recommendations
MS Regions	Preparation of the Plan
	CAP interventions tailored to their needs
	Implementation, progress towards targets



The CAP post 2027 within the Vision: guiding principles

1. **Simpler** and **more** targeted - building on the experience of the current CAP Strategic Plans
2. **Further responsibility and accountability for Member States** on how to meet policy objectives
3. **Predictability** for farmers' income and **attracting** a future generation of farmers, to guarantee food security
4. **Further flexibility for farmers**, shift from requirements to more incentives-based measures



Key elements of the CAP after 2027

1. **Building on a performance-based policy and strategic planning**
2. **Safeguarding income support for farmers:** CAP specificities preserved; **Targeted income support**
3. **Simplification:** less details; wider use of lump-sums; common and harmonised rules; easier access to other funds...
4. **Synergies:** a comprehensive, integrated approach to address the challenges of rural areas
5. **Resilience:** comprehensive reply to crises and mounting market uncertainties including through a dedicated “Unity Safety Net”



Improving the CAP toolbox

The CAP Regulation:

CAP national recommendations and steering

Farm stewardship

Environment and climate priority areas

Types of support

Generational Renewal Strategy

Starter pack for young farmers

Authority in charge of data governance under the CAP

Measures to resolve specific problems

Committee procedure

Degressive area-based income support

Coupled income support

Crop specific payment for cotton

Payment for natural and other area specific constraints

Payment for disadvantages resulting from certain mandatory requirements

Agri-environmental and climate actions

Payment for small farmers

Risk management tools

Investments for farmers and forest holders

Setting-up of young farmers, new farmers, rural businesses and start-ups

Farm relief services

Sectoral interventions

LEADER

Knowledge sharing and innovation

Territorial and local cooperation

School scheme

POSEI-SAI

Crisis payments for farmers

Exempted from reforms and budgetary flexibility (except on investment)



EU specific objectives: CAP related

1) To support the Union's sustainable **prosperity** across all regions

2) To support the Union's **defence capabilities** and **security** across all regions

3) To strengthen **social cohesion** by supporting people and strengthening the **Union's societies** and the Union's social model

4) To sustain the **quality of life** in the Union

5) To protect and strengthen fundamental rights, democracy, the rule of law and to uphold Union values by

Supporting fairer and sufficient income for farmers and their long-term competitiveness, including the farmers' position in the value chain

Contributing to long-term food security

Enhancing rural attractiveness and living standards, ensuring fair work conditions, fostering generational renewal, improving farmers' preparedness to cope with crisis and risks, and promoting knowledge, innovation, and the digital-green transition in the agri-food sector

Promote resilient climate action, ecosystem services, efficient water management, biodiversity, soil and natural resources, and animal welfare



Strengthening synergies

1. **Beyond income support**, farmers can benefit from synergies with investments in e.g. services, infrastructure, bioeconomy, innovation, skills, biodiversity and conservation programmes, energy, and climate initiatives.
2. Member States and regions can develop more coherent and **integrated strategies for rural areas** tapping on the broader NRP toolbox
3. Support to **reforms** benefiting the agricultural sector to enhance impact of CAP interventions, without impacting on farm payments.



What are the changes?



Fairer and better targeted public support

1. Member States should target farmers who are the **most in need**, in particular **young and new farmers, women, family or small farmers**, farmers combining the production of **crops and livestock** or farmers in **areas with natural or other area-specific** constraints.
2. Mandatory **degressivity** (starting at EUR 20.000 per farmer/year) and **capping** (EUR 100 000 per farmer/year)
3. The support should be primarily directed towards farmers who **exercise an agricultural activity** on their holding and **actively contribute to food security**

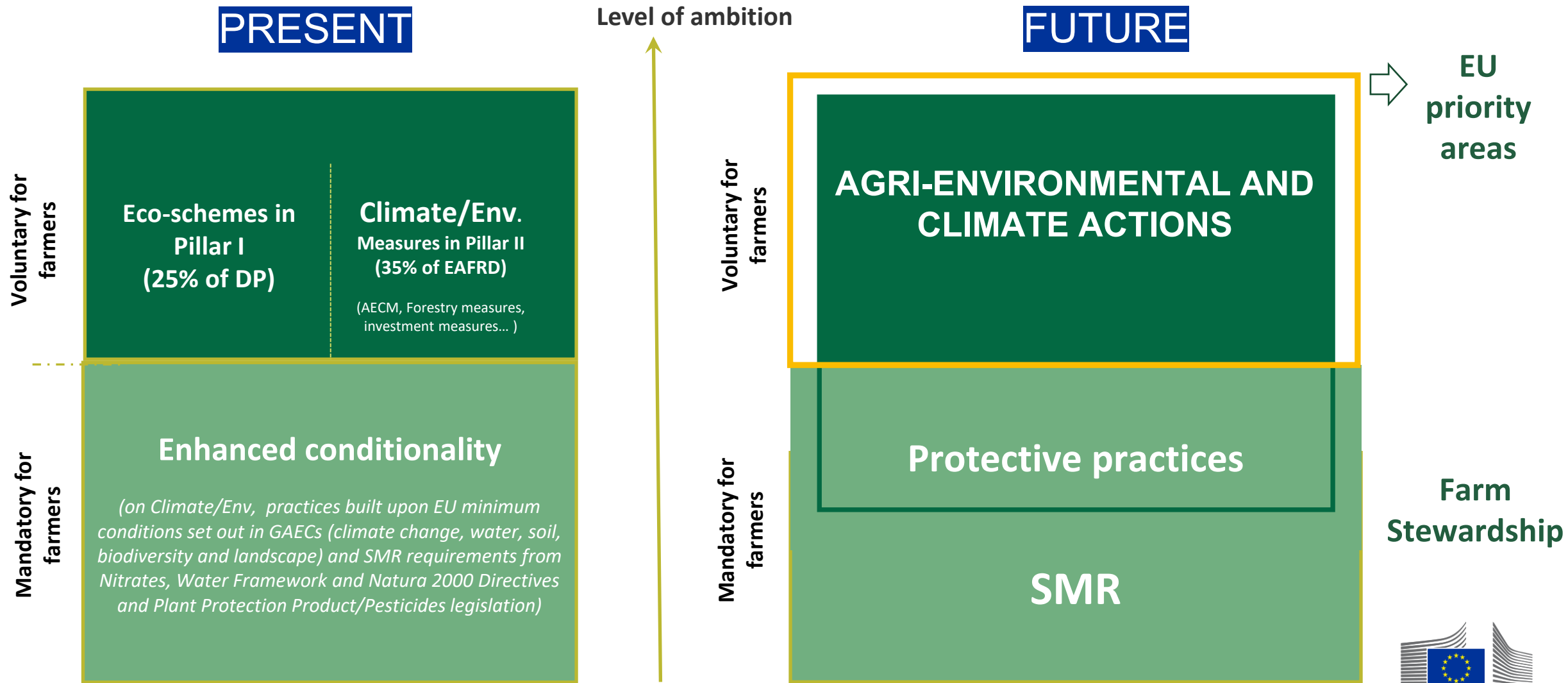


Delivering environment and climate benefits: moving from conditions to incentives

1. New **farm stewardship** to uphold high environmental and animal welfare standards adapted to the national farming context, and workers' rights
2. **Streamlined support for environmental and climate action** (integrating current eco-schemes and AECM) with further flexibility for Member States and farmers
3. Help farmers to **de-risk the transition** towards more sustainable and resilient farming systems : a new transition action (lump sum)
4. **New co-financing approach**, thus more opportunities to better reward delivery of more ambitious ecosystem services going beyond legal obligations



The new green architecture



A new farm stewardship system

14 Statutory Management Requirements

Area	SMRs	Area	SMRs
Climate and environment	Water (2)	Empl. of workers	Working conditions (1)
	Biodiversity (2)		
Public health and plant health	Food safety (2)		Occupational safety and health (2)
	Plant protection products (2)		
Animal welfare	Animal welfare (3)		

Protective practices

Area	Practices protecting...
Climate and biodiversity	Carbon-rich soils, wetlands, peatlands and landscape features
	Environmentally sensitive permanent grasslands on agricultural area in Natura 2000 areas
Soil health	Soil from erosion
	Soil potential (soil cover, crop rotation or diversification)
	Soil organic matter (residue management, ban on burning stubble)
Water	Water courses and ground water against pollution and runoff, (inc. via buffer strips)

Improving farm resilience

1. Comprehensive **national strategies for farm resilience and risk management** to promote a more coherent use of CAP and national tools
2. **Incentives for farmers** to adopt sustainable and climate-resilient practices and encourage the use of **risk management tools** such as insurance and mutual funds
3. A **dedicated crisis and risk management approach** rewarding those farmers who take a proactive stance towards strengthening their farm's resilience and risk management



Attracting a new generation of farmers

1. **National generational renewal strategies** to focus and prioritise support for young farmers under the Plans in synergy with national interventions
2. A more flexible **definition of young farmer**
3. Possibility for Member State to refocus income support on young farmers' needs
4. A new “**starter pack**” to provide **easier access to comprehensive support** to start and grow farm businesses, fostering entrepreneurship and grasping new opportunities
5. Support to **farm relief services** to improve work-life balance and overall wellbeing, and create the space to focus on business development such as via training and upskilling
6. More opportunities for **integrated investments in rural areas** to boost economic diversification, services development and attractiveness for farmers and their families



A stronger response to crisis

Natural disaster

Provide, among others, **crisis payments to farmers** and support on-farm **investments in the restoration of agricultural potential**

Stage 1
Amendment of the Plan for an amount up to 1% of its Union financial allocation

Stage 2
Amendment of the Plan from their **unprogrammed flexibility amount (25%)** up to 2,5% of its Union financial allocation

Stage 3
If stage 2 not sufficient, additional support from the Union actions (EU Facility), **European Union Solidarity**

Stage 4
If stage 3 not sufficient, additional support for emerging challenges from the '**budget cushion**' (EU Facility)

Market disturbance

Unity Safety Net
specific for agriculture
(6.3 billion €)





© European Union 2025

Unless otherwise noted the reuse of this presentation is authorised under the [CC BY 4.0](#) license. For any use or reproduction of elements that are not owned by the EU, permission may need to be sought directly from the respective right holders.

Slide – in all slides with pictures the source is Adobe Stock

